

# Body Of Fear – Rider V1.1

## Table of Contents

General Information.....	3
Adaptability and measurements.....	3
The Gang .....	3
Contact information .....	4
Glossary.....	4
Dressing room, props and hospitality .....	5
Dressing Room .....	5
Props .....	5
Hospitality .....	5
Parking .....	5
Audio .....	6
Speakers .....	6
Microphone.....	6
Audio Setup.....	6
Lights .....	7
Haze and smoke .....	7
Filters.....	7
Fixture list.....	7
Focus list and light plot .....	7
Focus List.....	8
Light Plot .....	9
Stage.....	10
Size .....	10
Cleaning.....	10
Entrance to the stage .....	10
Stands and gallery .....	10
Scenery used as projection surfaces (screen, stripes and painting) .....	11
Screen (4.4m (at least) x 4m) .....	11
Stripes (1.2m x 4m) .....	11
Painting (6m x 3m) .....	11
Special “Messses” .....	11
Prosecco .....	11

Smoking.....	11
Tools .....	11
Stage Plot .....	12
Stage Pictures.....	13
Video .....	15
Projectors .....	15
Projector for the screen and stripes.....	15
Projector for the painting.....	15
Control interface .....	15

## General Information

Thank you for reading our rider <3

### Adaptability and measurements

The information provided here is in case of ideal circumstances. We are happy to adapt, just talk to us! <3

All measurements provided are **width x height**.

### The Gang



Name	Pronouns	Function
Benjamin Spinnler	He/him	Performer
Claudia Popovici	She/her	Performer
Jonas Häni	He/him	Performer / Audiofuzzy
Jon Brunke	He/him	Technician
Martina “Momo” Kunz	She/her	Performer
Matthias Kobi	He/him	Production Manager
Max Quiñones Santander	He/him	Performer
Sofia Zambrano	She/her	Performer

### Contact information

<b>What</b>	<b>Name</b>	<b>Phone</b>	<b>Mail</b>
Production	Matthias Kobi	+41 79 726 32 89	vereinhelene@gmail.com
Lights, video, stage, general technical thingys	Jon Brunke	+41 79 173 30 84	jo.brunke@hotmail.com
Audio stuff	Jonas Häni	+41 76 522 89 69	jonas.haeni@outlook.com

### Glossary

<b>Name</b>	<b>Definition</b>
Gallery	The 4 paintings/sculptures positioned somewhere in the stands.
Measurements	All measurements provided are <b>width x height</b>
Painting	The big painting, stage right
Stripes	The 4 vertical stripes of fabric, stage right
Screen	The screen positioned at the back of the stage
Painting	The big painting, stage right

## Dressing room, props and hospitality

### Dressing Room

We will need a dressing room adequately sized for our costumes and chaos. It should have a mirror, washing machine, toilet and shower. In a perfect world it's connected to the stage in the back corner, stage left for the entrance.

### Props

We will need the following to be provided by the theatre:

- 3 chairs to be used on stage
- 6x AA Batteries for the Keytar (as a backup)

### Hospitality

If you could provide us with some snacks and beers, we would be very happy <3

### Parking

As we will bring props and scenery by car, please provide safe parking near the venue or accommodation.

## Audio

### Speakers

As for speakers we need the following:

- 1x pair of speakers positioned in the corners at the back of the stage, which function as monitors for the stage.
- 1x pair of speakers positioned at an appropriate position towards the audience which function as tops.
- An appropriate number of subs positioned either below the stands (preferred) or to the left and right of the stage.

They should be able to be controlled separately by our Audiofuzzy on stage ([Sound Setup](#))

### Microphone

We need one wireless microphone with mic stand on stage, also controlled by our Audiofuzzy.

### Audio Setup



## Lights

### Haze and smoke

The use of haze and smoke is necessary for this production. Please make sure to disable all alarm systems accordingly.

### Filters

Please provide filters as specified in the focus list. We will not bring any ourselves.

### Fixture list

The fixtures provided here are for the ideal circumstances, please contact us if these cannot be matched to look for a solution.

- 10x S4 LED S2 Lustr
- 7x Arri L7 C
- 7/8x ETC S4 25-50°
- 0/1x ETC S4 15-30°
- 4x Fixture for the gallery (No specific fixture type)
- 1x Audience lights (No specific fixture type)
- 1x Hazer
- 1x Smoke machine
- 1x Mirror Ball, >=40cm in diameter

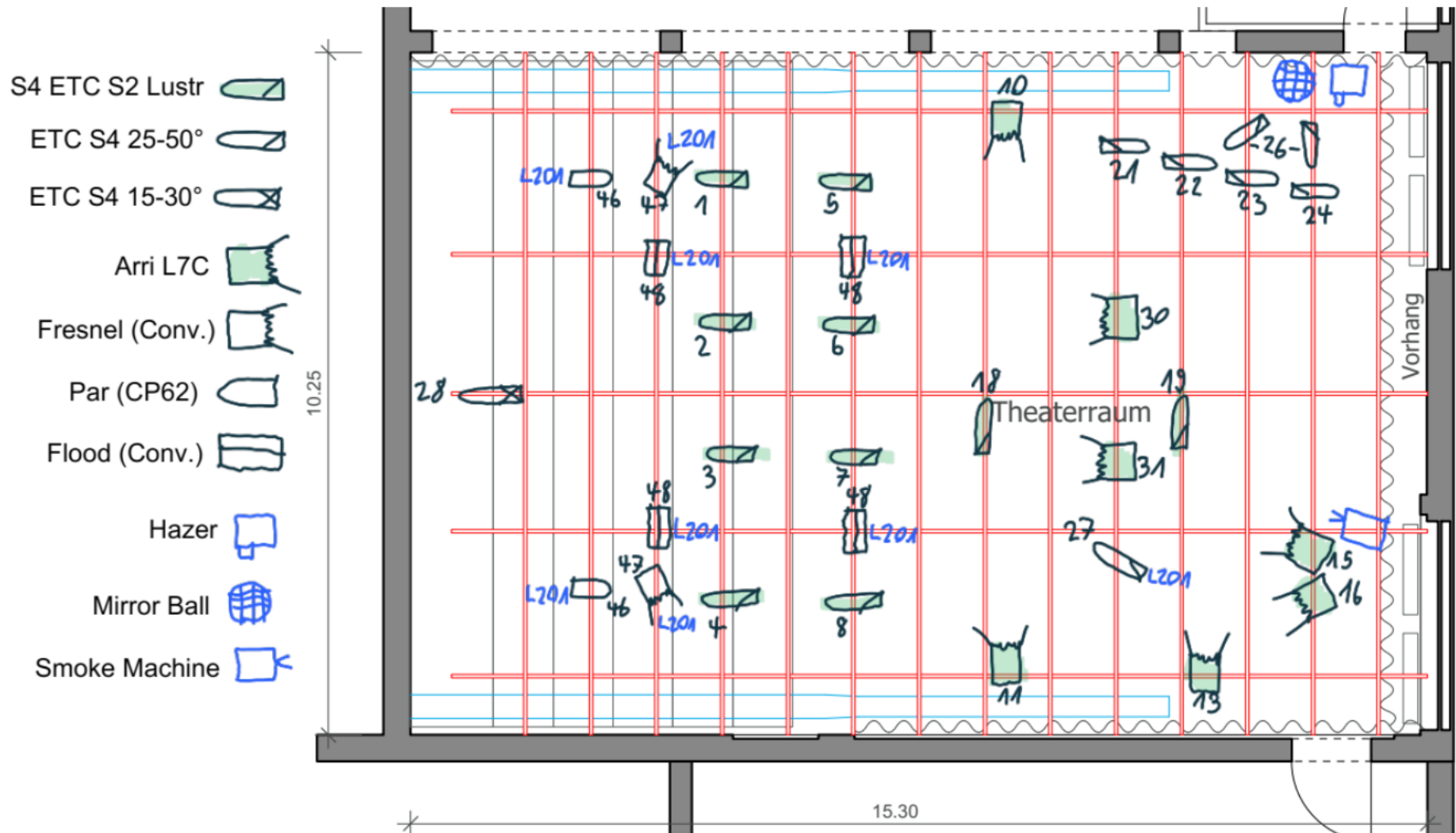
### Focus list and light plot

- Focus list: [Focus list](#)
- Light plot: [Light plot](#)

## Focus List

ID	Name	Type and Mode	Filters	Function	Additional Info
1	1. Front Left Out	S4 LED S2 Lustr HSIC		General Front	Cut off Screen (Back)
2	1. Front Left In	S4 LED S2 Lustr HSIC		General Front	Cut off Screen (Back)
3	1. Front Right In	S4 LED S2 Lustr HSIC		General Front	Cut off Screen (Back)
4	1. Front Right Out	S4 LED S2 Lustr HSIC		General Front	Cut off Screen (Back)
5	2. Front Left Out	S4 LED S2 Lustr HSIC		General Front	Cut of Stripes, can be on screen
6	2. Front Left In	S4 LED S2 Lustr HSIC		General Front	Can be on screen
7	2. Front Right In	S4 LED S2 Lustr HSIC		General Front	Can be on screen
8	2. Front Right Out	S4 LED S2 Lustr HSIC		General Front	Can be on screen
10	Side Left Front	Arri L7 C P.006		Side light for front of stage (roughly up to the stripes)	
11	Side Right Front	Arri L7 C P.006		Side light for front of stage (roughly up to the stripes)	
13	Side Right Back	Arri L7 C P.006		Side light for back of stage	Cut of Stripes
15	Back Left	Arri L7 C P.006		Back light for back of stage	Cut of Screen and stripes
16	Back Right	Arri L7 C P.006		Back light for musicians	
18	Painting Front	S4 LED S2 Lustr HSIC		Cut edges of painting	
19	Painting Back	S4 LED S2 Lustr HSIC		Cut edges of painting	
21	1. Stripe	ETC S4 25-50		Rectangular spot behind stripe, not hitting it	
22	2. Stripe	ETC S4 25-50		Rectangular spot behind stripe, not hitting it	
23	3. Stripe	ETC S4 25-50		Rectangular spot behind stripe, not hitting it	
24	4. Stripe	ETC S4 25-50		Rectangular spot behind stripe, not hitting it	
26	Mirrorball	2x ETC S4 25-50	Iris	Spots on mirror ball from front and side	
27	Musician	ETC S4 25-50	LEE 201	Shower/Front on musician	
28	Spot	ETC S4 25-50 / 15-30	Iris (25-50)	Spot for shadow of bar scene on screen	
30	Shower Left	Arri L7 C P.006		Shower for the whole stage	Cut of walls, screen and stripes
31	Shower Right	Arri L7 C P.006		Shower for the whole stage	Cut of walls, screen and stripes
46	Paintings Stands	Any Conventional	LEE 201	Soft spot on paintings	
47	Dogs Stands	Any Conventional	LEE 201	Soft spot on dogs	
48	Audience	Any Conventional	LEE 201	Audience lights	
100	Haze	Any Hazer 2CH.			
101	Fan				
102	Smoke Machine	Smokemachine 1 CH.		Positioned towards the middle of stage but slightly left	Check with momo concert mic position

# Light Plot



## Stage

### Size

The ideal size of the stage would be about **10m x 8m or bigger**. We are however able to adapt!

### Cleaning

It will get messy! There's gonna be paper, water and all kinds of things flying and lying around. Therefore we will clean the stage ourselves before each show, please provide adequate cleaning equipment.

### Entrance to the stage

We need an entrance to the stage, located in the back corner, stage left of the stage. Ideally there's a room which can function as the wardrobe. If this is not available, contact us and we will find a solution with curtains, portable walls or something.

### Stands and gallery

The performers will enter the stands during play for some scenes and to interact with the audience. Please make sure that the stairs are kept free for that purpose.

We will also, if possible, place 4 objects in the stands.

- Dog, ca. 2.6m x 2.7m
- Dog, ca. 2.2m x 2.7m
- Picture, ca. 1.5m x 1.75m
- Picture, ca. 1.5m x 1.75m

There are two possible ways to achieve this:

1. **Hung:** We hang them from the rig via "Reutlinger" or steel cables. The pictures can also just be taped to the wall, or clamped to the curtain.
2. **With supports:** We fasten stands out of small wooden beams that we fix to the railing of the stands.

Anyway, we'll make it work.

### Scenery used as projection surfaces (screen, stripes and painting)

The scenery we use for projection consists of three parts. We will bring some wooden beams, steel cables and fasteners for this (we could also use “Reutlinger” if you have):

#### Screen (4.4m (at least) x 4m)

**We will need a front projection screen at the back, stage right of the stage.** We also need a curtain positioned a little in front of the screen to cover the part we don’t need/the rest of the stage. The width can vary, depending on the proportions on stage.

#### Stripes (1.2m x 4m)

**We will hang 4 stripes, positioned at the back/stage right of the stage,** which are 4 meters high and should be hung so that they almost touch the floor. They are 1.2m wide and hung with about 1m distance from each other, from the middle of the stage towards the back, gradually moving inwards.

#### Painting (6m x 3m)

We will need to hang a painting on the wall, stage left, of the stage. The painting can be hung via “Spannfix” or via a wooden beam with Velcro, both of which we bring with us.

### Special “Messses”

#### Prosecco

In one of the scenes a performer will drink/pour prosecco over themselves in the stands. If they are covered with carpets, we will need to find a solution not to ruin it.

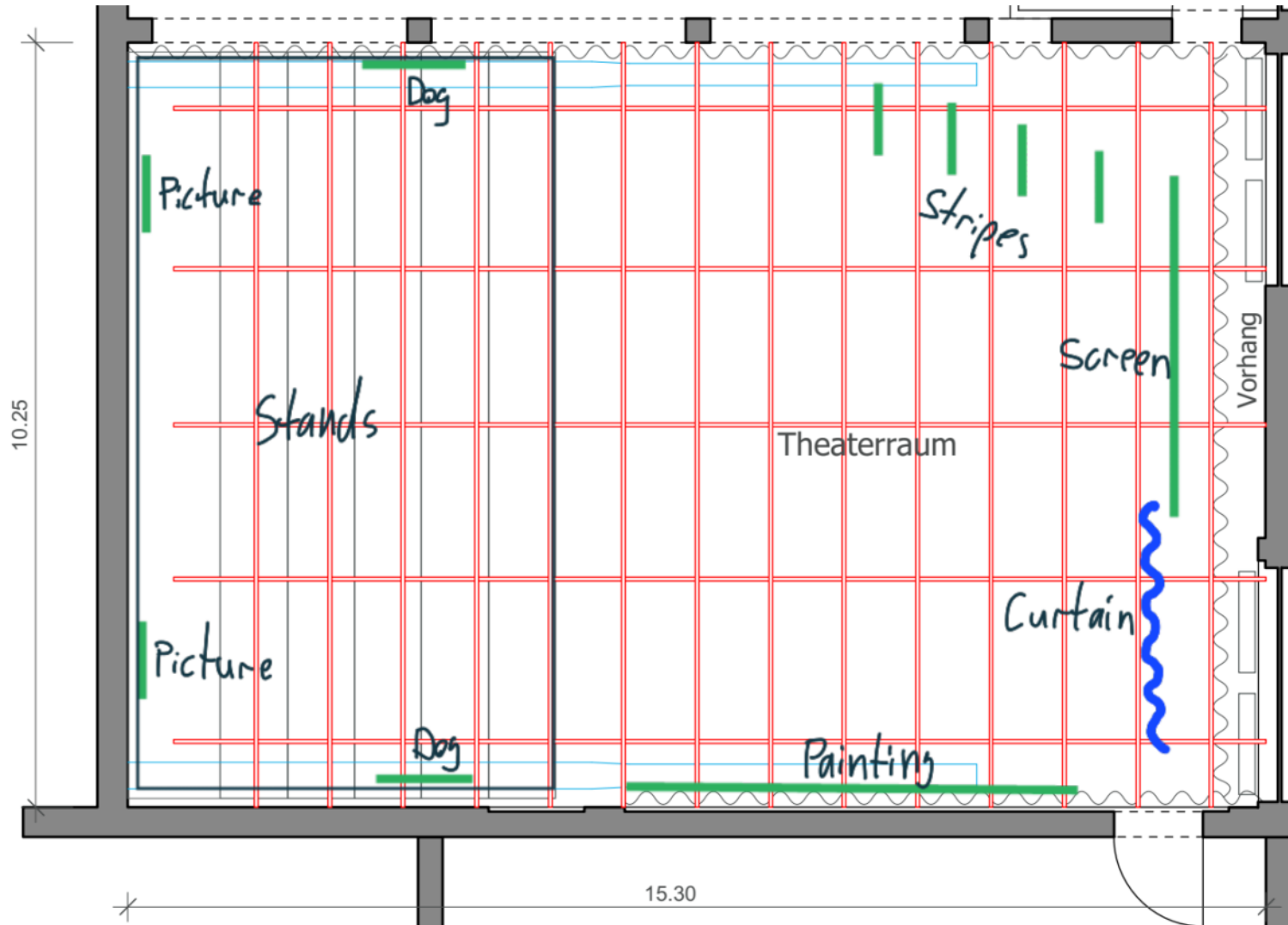
#### Smoking

Some performers will be smoking on stage during the play. It is only for a small scene though. If this is not possible or permissible on your stage, please let us know.

### Tools

In case we need to fabricate some supports or hanging material we will require some screws, an electric screwdriver and a small wood saw. **Please let us know if this cannot be provided and we need to bring them ourselves.** We will bring some wooden beams, steel cables and fasteners to get everything where it needs to be, but can also use some Reutlinger if you have.

Stage Plot



Stage Pictures





## Video

### Projectors

We need **two projectors with at least 7000 lumens**. They don't need to have a controllable shutter or blacky setup. But network control from the FOH would be appreciated. Please make sure they cover an area a little bigger than the projection surfaces listed below. **All the surfaces are front projected.**

#### Projector for the screen and stripes

- This projector should cover the screen at the back and all of the stripes (about 4.2m x 7.2m *warped*, but can vary depending on stage size).
- Should be at about a 60° angle to the screen at the back.
- Depending on the positioning of the lights, the projector should be hung below the rig. Although it's not bad if we hit the other fixture a bit, just not too much.

#### Projector for the painting

- The projector should cover the painting, stage left (3m x 6m *warped*)
- This projector is usually positioned behind the first stripe, stage right.

### Control interface

We use QLAB 5 to control both projectors, therefore we need **two separate signals from the FOH** to the projectors. Please provide **network or fibre optics HDMI cables** if the distance is longer than 10m. If you can provide an adequate MacBook, we'll use yours, else we can bring one ourselves.