

Technical Rider – English

TOURIST TRAP

by Thom Luz & Ensemble

Production

Thom Luz and Bernetta Theaterproduktionen

Coproduction

Kaserne Basel, Gessnerallee Zürich, Théâtre Vidy Lausanne, Teatro Stabile dell'Umbria, Bühne Aarau



Production

Bernetta Theaterproduktionen

Gabi Bernetta

Wasserwerkstrasse 96 | CH-8037 Zürich

+41 44 440 66 07 | +41 79 419 20 34

gabi.bernetta@bernetta.net

www.bernetta.net

Technical Direction/Light

Jens Seiler

Tel. +41 76 393 19 33

jens.seiler@bernetta.net

Sound

Martin Hofstetter

Tel. +41 79 222 89 86

martin@ho-fi-ton.ch

GENERAL INFORMATION

This rider is to help make preparation for performances go as smoothly and efficiently as possible. If there are any requirements that the host venue cannot meet, please contact our technical director as soon as possible to work on a solution together.

The FOH area for lighting, sound, and video must be set up behind the audience **in the same room**. Please do not set up in separate control rooms, even if a window can be opened. We need two tables that are no bigger than 120 x 70 cm.

STAGE/SPACE

Stage size of at least 14 m wide | 12 m deep

Platform seating tiered upwards according to visibility, **no row of chairs on the floor**.

Floor

We need a black dance floor, preferably from left to right. If you have an old used one, please use this.

We will bring a black exhibition carpet (B1) to put over the dancefloor to protect it.

There will be a lot of dirt and sand spilled.

Stage Set

Left and right we need black legs, which will be tied up. (See picture)

We bring along a wooden fence, which has to be fastened to the floor. If screwing is impossible, we would need stage weights to weight it down.

We also have a machine in the rig from where sand/dust will be dropped. There are 4 coupler Clamps on the back of the board, but we need 2 short pipes to attach it to the rig. (see picture)

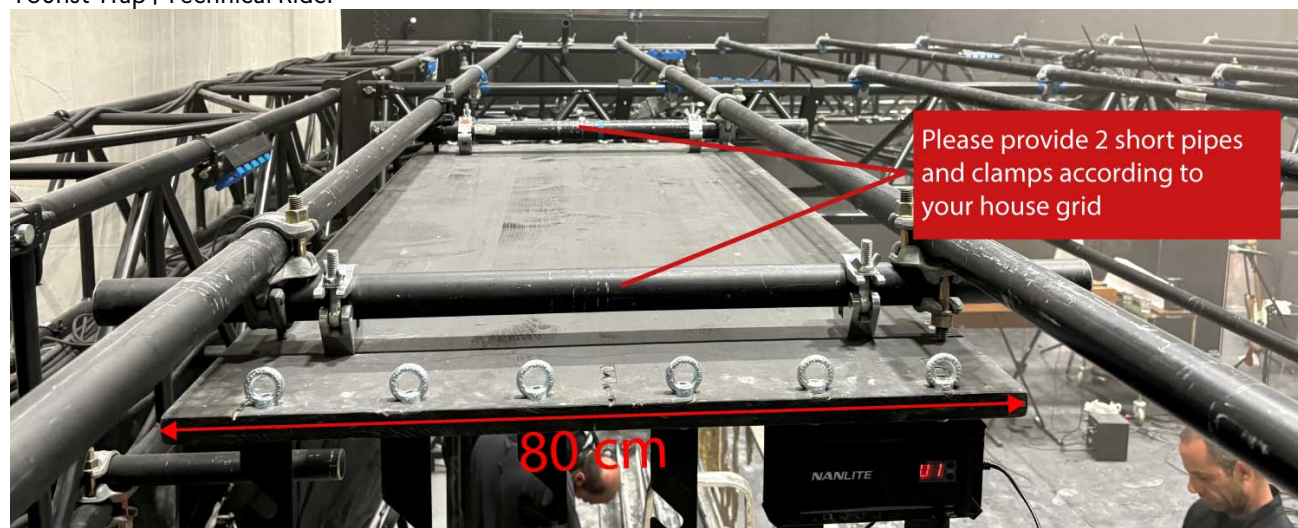
We will bring along an opera foil (14x6m) and a black muslin which will be attached to a wooden slat with Velcro so it can be ripped down in the performance.

Furthermore, we have 3 medical water dripping bags in the rig, which will be dripping waterdrops on 3 tables on the stage.

We need to refill the sand every day, so the rig has to be movable at all times.

And there will be fog, lots of fog.

The stage must not be cleaned after rehearsal and performances. The mess is part of the setting.



Stage

Beamer

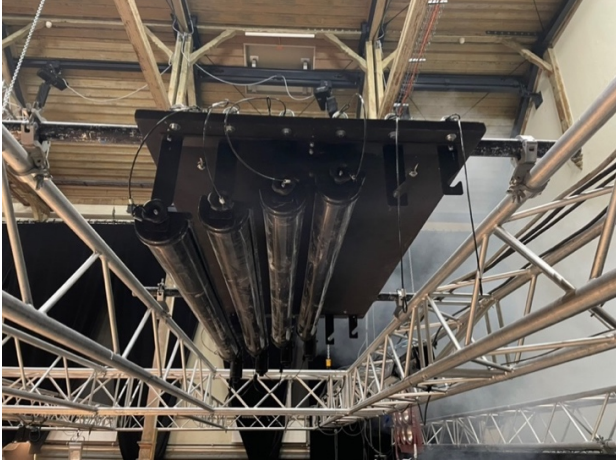


Fence

Fog



Machine for sand and dirt



LIGHTING

We will bring along:

- 6 WW/CW Floodlights
- 1 Xtylos moving head
- 10 24V LED Lightbulbs
- 1 1000W Industrial Lamp
- 4 70W HQI (for this we need at least 1 true non dim channel)
- 2 Blinders
- 1 MDG Fog machine

We will need:

- 10 Variable white LED Profiles 50° (PCs or Fresnels are also OK)
If you have profile moving heads with a decent CTO, we can do with 8.
- 5 1000W Floodlights asymmetrical or symmetrical, doesn't matter.
- 4 PAR 64 CP62
- 5 Floorboards for the Pars and 1 Floodlight
- 4 Lighting Stands (Height ca. 140cm) for 4 Floodlights
- 1 External DMX Shutter for our Video Beamer
- 1 CO2 Bottle 3-5kg for the MDG



We need a ETC EOS Lighting Console (ION/GIO/II/APEX)
If you do not have one, please let us know.

SOUND

We will provide:

Mixing-Desk (Yamaha QL1) and Stagebox (if necessary)
All DI-Boxes

We will need:

Speakers Upstage (at least 12"), flown at 3.5m above ground
Subs Upstage, behind the opera-foil
Speakers FOH, point-source is preferred over a line-array due to optical reasons
Subs under the grandstand
Direct Cat 5 (or higher) network Connection from FOH to the stage, max. 75m length
3 x Wireless **belt-packs with Instrument Jack input-cable**
3 x SM58 microphone & boom-stand
1 x KM184 or similar & boom-stand & wind screen
Sufficient XLR- and Power-cables

If there's already a Yamaha Dante network present, we're happy to use it.

Audio Patch:

Inputs

- 01 Table 1 Wireless BP w.instrument-jack
- 02 Table 2 Wireless BP w.instrument-jack
- 03 Table 3 Wireless BP w.instrument-jack
- 04 Nord DI
- 05 Bass Hi-Flyer DI
- 06 Bass Mustang DI
- 07 Stompbox DI
- 08 Mandolin DI
- 09 Glassharp KM184
- 10 Voc Fhun L SM58 with 15m Cable
- 11 Voc Fhun SM58 with 20m Cable
- 12 Voc Mara SM58 + Boomstand

Outputs

- 01 Speaker Pipe Own
- 02 Speaker Keys Own
- 03 Speaker Modell Own
- 04 Ampeg Own
- 05 Speaker Front L
- 06 Speaker Front R
- 07 Speaker Upstage L
- 08 Speaker Upstage R
- 09 Subs Upstage
- 10 Subs Grandstand

VIDEO

We need a HDMI connection from the stage (left side front corner) to the FOH. And an external DMX Shutter (as mentioned in the lighting part already). We bring our own Beamer. For the **subtitles we need a Beamer** flown with a HDMI connection to the FOH. We will run the subtitles ourselves. We will project them on a piece of the set. (see photo)

TIMEPLAN

The technical installation must take place the day before the first performance. For the installation (start time by agreement) we will need at least 2 stage technicians, one lighting technician, and one sound technician.

On the day of the first performance, we will begin rehearsal at 11.00 am. In case of problems, it is sufficient if a technician familiar with the facilities of the theatre is present during the rehearsal or is accessible on site.

Schedule Example:

Day 1: 09:00-19:00 Unload, Setup (2 Stage, 1 Lighting, 1 Sound/Video) including 1h lunchbreak

Day 2: 09:00-17:00 Finishing, Setup for rehearsal, Rehearsal, Corrections (11:00 rehearsal) 1h lunchbreak
18:00-22:00 Stage prep, warm up, performance. (If the show is at 20:00)

Day 3: 18:00-22:00 Stage prep, warm up, performance. (If the show is at 20:00)

Day 4: 18:00-23:00 Stage prep, warm up, performance, strike down, loading

Dismantling will take place after the last performance and should not take longer than 90 minutes.

We need a parking space for a medium-sized truck (7.5 t, approx. 8 m long and 3.7 m high) for the entire duration of the performance.

COSTUME

Costumes must be washed and ironed after each performance.

1x white laundry (shirts etc) with 30 degrees

1x dark laundry (Suits) at 30 degrees

The **costumes** must be washed and hung immediately after each performance (or in consultation with us) and they should not be put in the dryer.

After the last performance we take the costumes unwashed with us.

WARDROBE

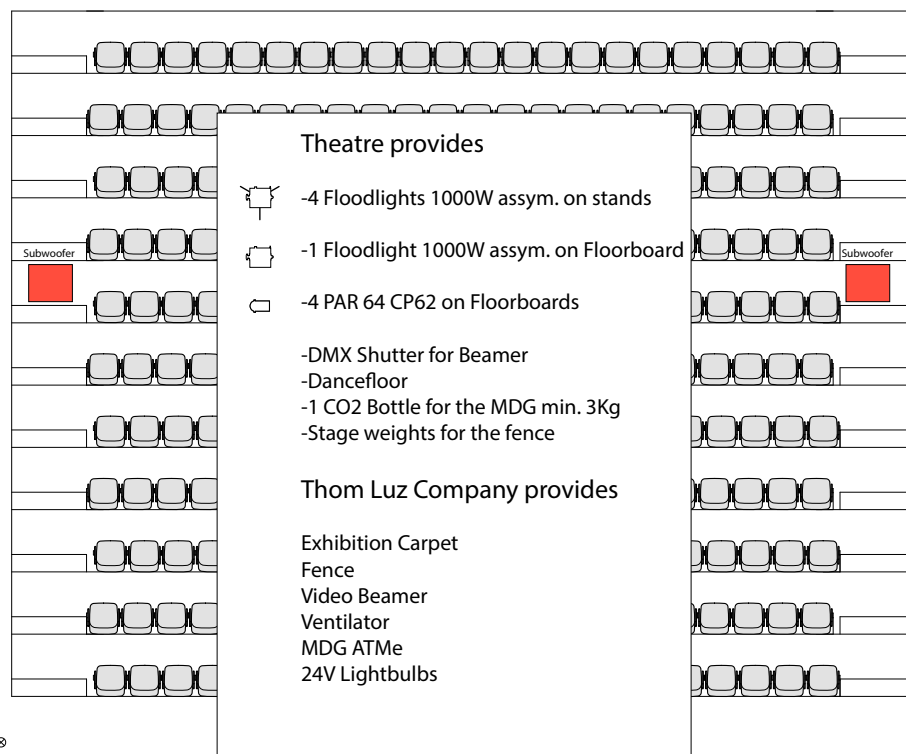
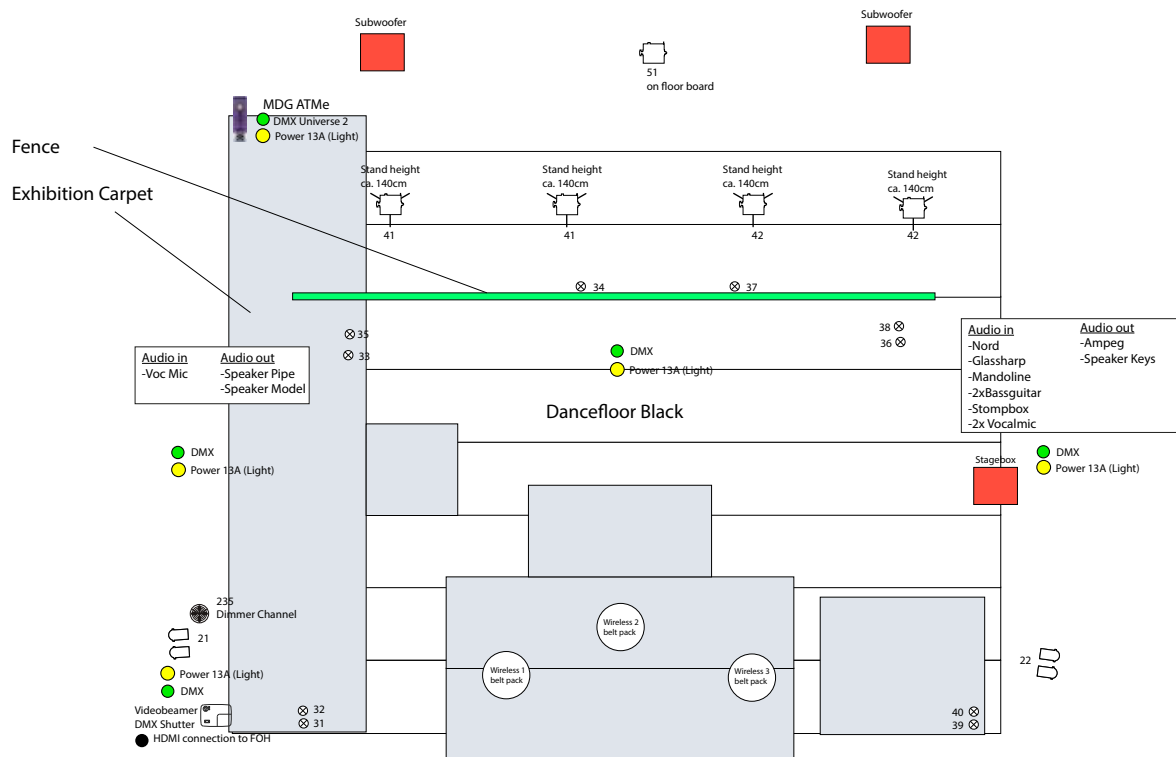
At least two dressing rooms for 5 actors (women/men).

One separate wardrobe must have a water boiler, a hairdryer and a big towel for one actor


CATERING

It would be great to have basic catering from the day of installation onwards with fruit, sweets, sandwiches, and mineral water, coffee and tea.


Thom Luz - Tourist Trap Floor Plan




Thom Luz - Tourist Trap

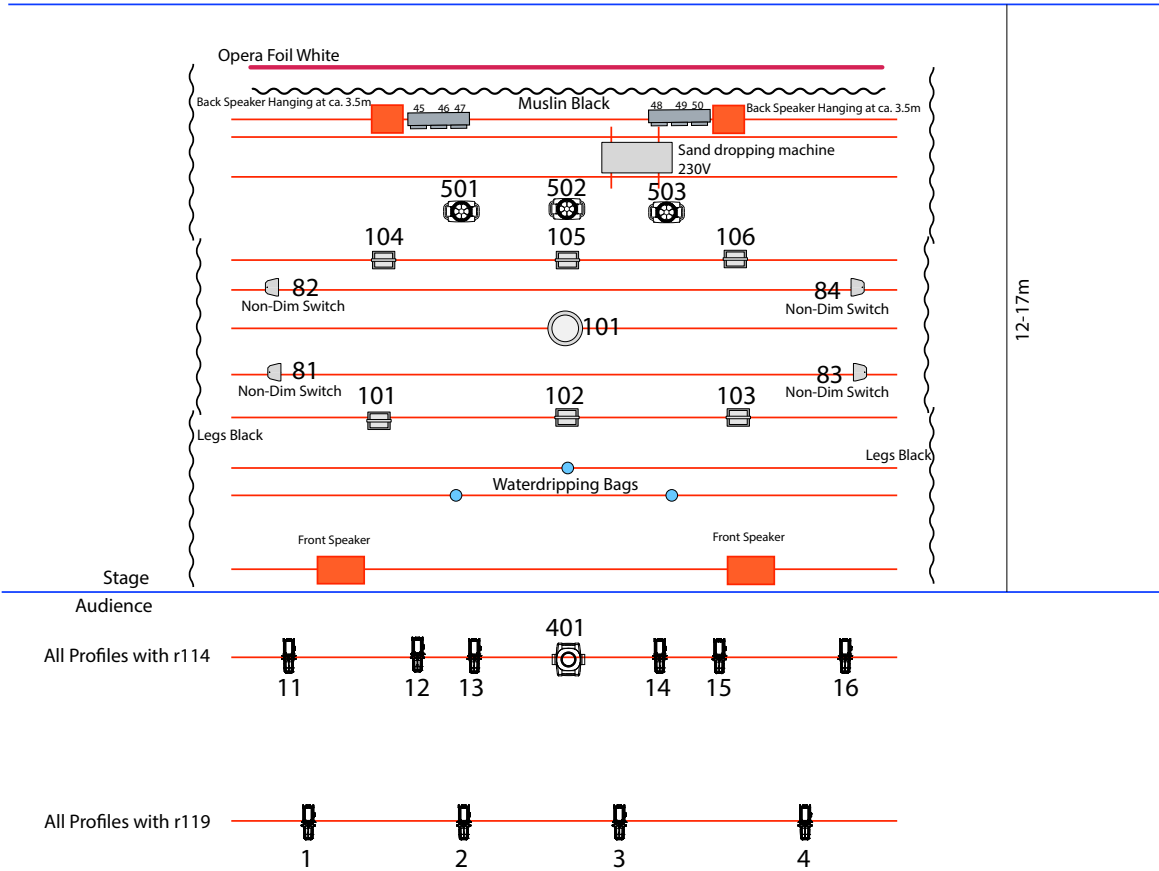
 Mini-B (or similar) if you have, we take them otherwise we try to provide them

Theatre provides

 10 ETC Lustr S2 or 3 or any variable white fixture.
PC or Fresnel is also welcome.
If Profile, they must be 50°
If you have Moving Heads we can do with 8pcs.

Thom Luz Company provides

-  Blinders
-  Clay Paky Xtylos
-  WW/CW Floodlight
-  Industrial Lamp 1000W
-  HQI 70W
- Opera Foil
- Muslin Black
- Sand dropping machine



Lighting console
ETC EOS ION/GIO/TI